

## frogblue Dimmer

**frogDim1-3**  
D1-3-300.01



### 1-channel dimmer switch

#### Intended use

Multifunctional 1-channel dimming actuator with 1 output for dimming/switching light and 3 inputs to monitor buttons and switches (110-240 V~). Switching and dimming of all lamps suitable for trailing-edge control. Leading-edge control is only permitted for inductive loads. With comfort and timer functions, power measurement and short-circuit detection. (1x 300 W @ 230 V~).

For installation in flush-mounted box according to DIN 49073. (For installation behind a switch insert a flush-mounted box depth of minimum 53 mm is necessary, otherwise single mounting is required.)

#### Safety information

Electrical equipment may only be installed and fitted by qualified electricians.

Failure to observe the instructions may cause damage to the device and result in fire and other hazards!

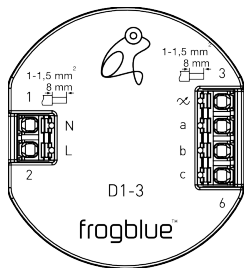
Danger of electric shock. Device is not suitable for disconnection from supply voltage. The load is not electrically isolated from the mains even when the device is switched off.

Danger of electric shock. Disconnect the power supply and switch off the circuit breakers before beginning work on the device or changing light bulbs.

Country-specific regulations must be observed.

These instructions are an integral part of the product and must remain with the end customer.

#### Device setup



L/N: Mains supply connection

∞: Load output 1

a: Input 1

b: Input 2

c: Input 3

#### Function

##### System information

This device is a product of the frogblue system. Detailed technical expertise obtained through frogblue training sessions is required.

The functionality of this device depends on the software. Detailed information regarding software versions and the respective range of functions can be found on the frogblue website.

The latest technical descriptions and further detailed instructions are available on the frogblue website at all times.

Commissioning and configuration are performed using the frogblue app.

##### Product characteristics:

- Short-circuit protection
- Temperature shutoff (>75 °C)
- Feedback of the switching state and the dimming value
- Programmable switching and dimming behaviour
- Switch-on and switch-off delay with switch-off warning
- Power supply via mains power cable, no additional cabling required between frogblue modules
- Configuration of leading-edge or trailing-edge control performed via the frogblue app (leading-edge control is only permitted for inductive loads)

#### Information for qualified electricians

##### Fitting and electrical connection



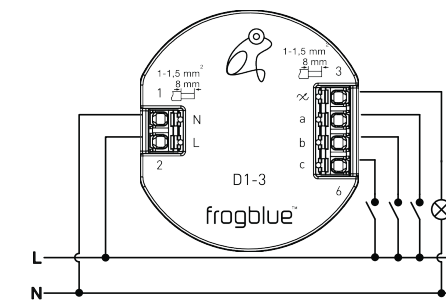
**DANGER!**

**Electric shock if live parts are touched.**

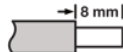
**Electric shocks can be fatal.**

**Before working on the device, disconnect the power supply and cover live parts in the working environment!**

##### Connecting and installing the device

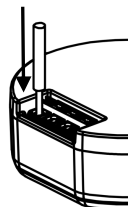


##### Stripping length



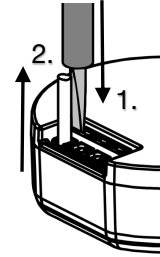
Ø 1 ... 1,5 mm<sup>2</sup>; rigid conductors recommended

##### Connecting wires



push conductor completely in terminal

##### Disconnecting wires



1. push and hold release button with screwdriver (size 3)
2. pull wire

*repeat the process with each wire*

##### Factory default output function

Output ∞: Dimmable lamp (trailing-edge control)

##### Factory default input function

Input		Output	
a	brief activation	A	toggle
a	closed	A	dimming

#### Technical data

Rated voltage	AC 110-240 V~
Mains frequency	50 / 60 Hz
Inputs	3; 110-240 V~
Bluetooth	Bluetooth 4.2 Low Energy
Frequency range	2400 MHz – 2483.5 MHz, max. 3.4 dBm
Ambient temperature	-25 ... +55 °C
Storage/transport temperature	-25 ... +70 °C
Outputs	1; 110-240 V~
Contact type	ε, MOSFET
Suitable loads	Incandescent lamps Electronic transformer Inductive load (no motor load)
Connected load	300 W / 300 VA (220-240 V~) 150 W / 150 VA (110-219 V~)

Dimensions (LxWxH)	48 x 53 x 21 mm
Connection type	Spring plug-in terminal
Core cross-section	1 ... 1.5 mm <sup>2</sup>

Technical changes reserved.

#### Warranty

The warranty is subject to the statutory provisions relating to the specialist retailer.

#### Declaration of Conformity

Hereby frogblue AG, Luxemburger Str. 6, 67657 Kaiserslautern, declares that this device is in compliance with the essential requirements and other relevant provisions of directive

2014/53/EU Radio Equipment Directive  
2011/65/EU RoHS Directive

The declaration of conformity is available at [www.frogblue.com](http://www.frogblue.com)