

frogblue Display

frogDisplay  
CU-Dis-A.01

Touchscreen user interface

Intended use

3.5“ touchscreen user interface with intercom and video intercom. Controlling of light, scenes and heating. With 2 inputs to monitor extra-low voltage contacts without auxiliary power supply.

For installation in flush-mounted box according to DIN 49073. (A flush-mounted box depth of minimum 53 mm is necessary.)

Safety information

Electrical equipment may only be installed and fitted by qualified electricians.

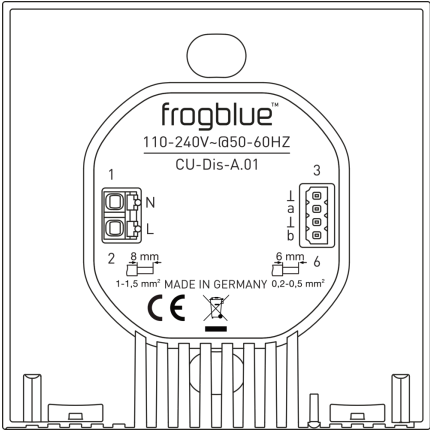
Failure to observe the instructions may cause damage to the device and result in fire and other hazards!

Danger of electric shock. Disconnect the power supply and switch off the circuit breakers before beginning work on the device.

Country-specific regulations must be observed.

These instructions are an integral part of the product and must remain with the end customer.

Device setup



L/N: Mains supply connection  
a: Input 1  
b: Input 2  
J: Ground

Function

System information

This device is a product of the frogblue system. Detailed technical expertise obtained through frogblue training sessions is required.

The functionality of this device depends on the software. Detailed information regarding software versions and the respective range of functions can be found on the frogblue website.

Technical descriptions, further detailed instructions and information for proper disposal are available in the manual on the frogblue website at all times. Commissioning and configuration are performed using the frogblue app.

Product characteristics:

- Wi-Fi interface
- Bluetooth interface
- Touchscreen interface
- Proximity-, brightness-, and temperature sensor
- Microphone and loudspeaker
- Power supply via mains power cable, no additional cabling required between frogblue modules

Information for qualified electricians

Fitting and electrical connection

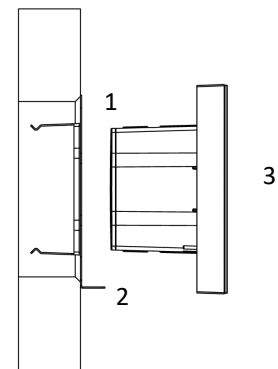
**⚠ DANGER!**  
**Electric shock if live parts are touched.**  
**Electric shocks can be fatal.**

**Before working on the device, disconnect the power supply and cover live parts in the working environment.**

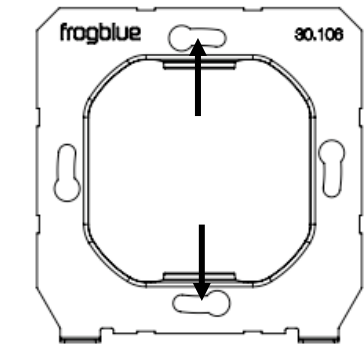
**⚠ DANGER!**  
**Do not connect mains supply (>50 V) to the inputs. This will put the safety of the entire system at risk! Persons can be endangered, devices and equipment can be destroyed.**

**The extra-low voltage wires may not be fed through the same opening of the junction box as the low voltage wires and should be installed as far as possible from them.**

Mounting the device



Mount the metal frame (1) on a flush-mounted box. Fix the screws preferably at the marked positions.

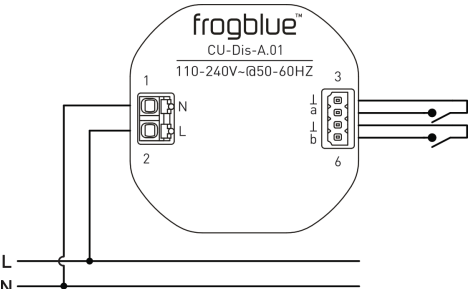


The latches (2) must point in the bottom direction.

Insert the display (3) in the metal frame. Please ensure that the latches (2) will fit into the openings of the display (3).

The display (3) must not be installed without the metal frame.

Connecting the device

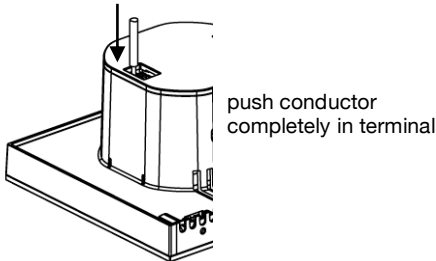


Stripping length

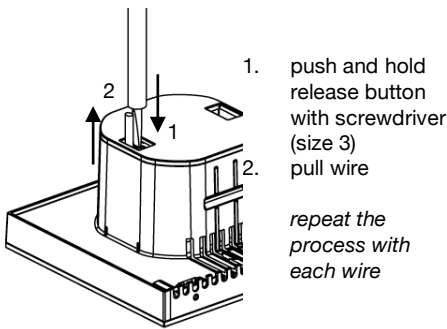
Ø 1 ... 1.5 mm²; rigid conductors recommended

Ø 0.2 ... 0.5 mm²; rigid conductors recommended

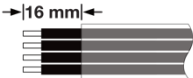
Connecting wires



Disconnecting wires

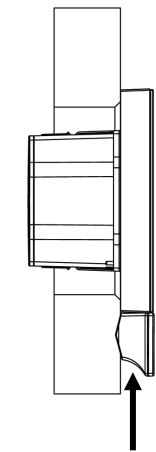


**The extra-low voltage wires must be run through the plastic tubing provided. The tubing must be shortened if necessary. The wires may protrude from the tubing by no more than 16 mm. The tubing must cover the complete length of the wires within the junction box.**

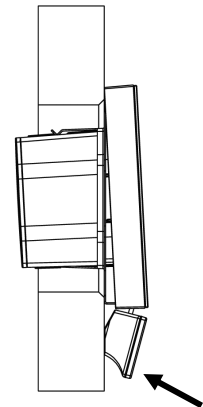


Unmounting the device

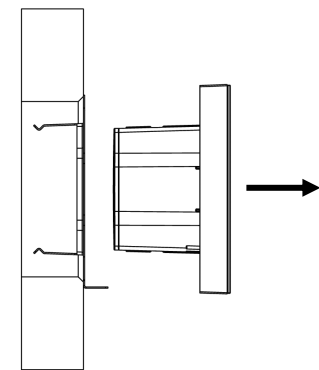
Put the unlocking tool on the bottom of the Display. Please notice that the pins of the unlocking tool are fully inserted in the 2 holes on the bottom of the display. The frogblue logo must point forwards. To protect the wall surface or on rough surfaces, place the enclosed plastic film below the unlocking tool.



Insert the unlocking tool into both holes.



Press the unlocking tool towards the wall to unlock the cube.



Grip the display laterally and pull it out of the holder.

Technical data

Rated voltage AC 220-240 V~  
Mains frequency 50/60 Hz

Inputs 2; Connection of potential-free contacts self-powered (2 V / max. 1 mA) or extra-low voltage contacts (max. 30 VAC / 50 VDC)

Bluetooth Bluetooth 4.2 Low Energy

Frequency range 2400 MHz – 2483.5 MHz, max. 4.5 dBm

Wi-Fi 802.11 b/g/n; 2.4 GHz

Frequency range 2400 MHz – 2483.5 MHz, max. 13.2 dBm

Ambient temperature -25 ... +45 °C  
Storage/transport temperature -25 ... +70 °C

Dimensions (LxWxH) 81 x 81 x 45 mm  
Connection type Spring plug-in terminal  
Core cross-section 1 ... 1.5 mm²  
Core inputs 0.2 ... 0.5 mm²  
Cable length max. 100 m

Technical changes reserved.

Warranty

The warranty is subject to the statutory provisions relating to the specialist retailer.

Declaration of Conformity

Hereby frogblue AG, Luxemburger Str. 6, 67657 Kaiserslautern, declares that this device is in compliance with the essential requirements and other relevant provisions of directive

2014/53/EU Radio Equipment Directive  
2011/65/EU RoHS Directive

The declaration of conformity is available at [www.frogblue.com](http://www.frogblue.com)