

frogblue Connect

frogConnect
SU-CO1-1.01

RC suppressor

Intended use

Eliminates functional disturbances like residual voltage. Reduces the afterglow of specific LED lamps in powered off state.
For use with frogblue dimmers.

For installation in flush-mounted box according to DIN 49073. (For installation behind a switch insert a flush-mounted box depth of minimum 53 mm is necessary, otherwise single mounting is required.)

Safety information

Electrical equipment may only be installed and fitted by qualified electricians.

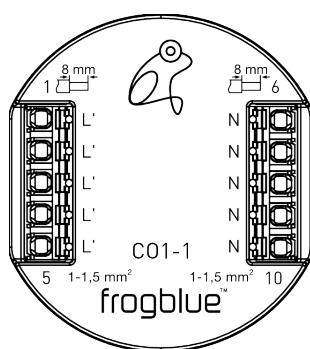
Failure to observe the instructions may cause damage to the device and result in fire and other hazards!

Danger of electric shock. Before starting work on the device or replacing light sources, disconnect the power supply and switch off the circuit breakers.

Country-specific regulations must be observed.

These instructions are an integral part of the product and must remain with the end customer.

Device setup



L': Output of dimmer/lead to load
N: Neutral

Function

System information

This device is a product of the frogblue system. Detailed technical expertise obtained through frogblue training sessions is required.

Technical descriptions, further detailed instructions and information for proper disposal are available in the manual on the frogblue website at all times.

Information for qualified electricians

Fitting and electrical connection



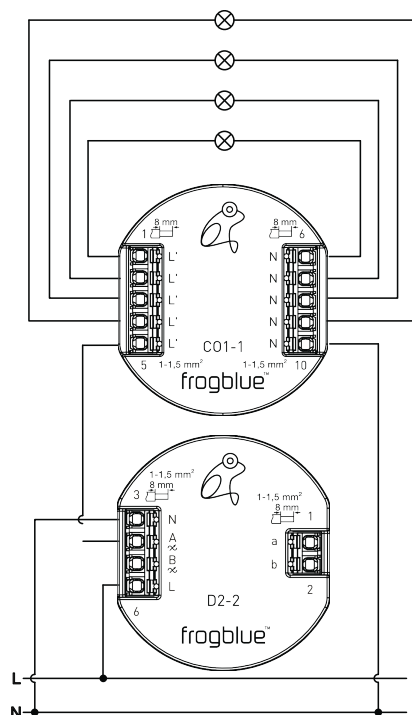
DANGER!

Electric shock if live parts are touched.

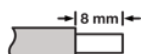
Electric shocks can be fatal.

Before working on the device, disconnect the power supply and cover live parts in the working environment.

Connecting and installing the device

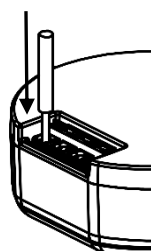


Stripping length



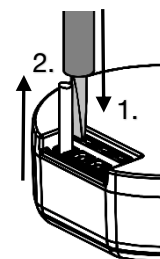
Ø 1 ... 1,5 mm²; rigid conductors recommended

Connecting wires



push conductor completely in terminal

Disconnecting wires



1. push and hold release button with screwdriver (size 3)
2. pull wire

repeat the process with each wire

Technical data

Power supply	AC 110-240 V~
Mains frequency	50 / 60 Hz
Ambient temperature	-25 ... +55 °C
Storage/transport temperature	-25 ... +70 °C
Capacity	0,15 µF
Maximum rated supply current	6 A

Dimensions (LxWxH)	48 x 53 x 21 mm
Connection type	Spring plug-in terminal
Core cross-section	1 ... 1,5 mm²

Technical changes reserved.

Further information to products, operating instructions as well as proper disposal are available in our user manual at: www.frogblue.com

Warranty

The warranty is subject to the statutory provisions relating to the specialist retailer.

Declaration of Conformity

Hereby frogblue AG, Luxemburger Str. 6, 67657 Kaiserslautern, declares that this device is in compliance with the essential requirements and other relevant provisions of directive

2014/53/EU	Radio Equipment Directive
2011/65/EU	RoHS Directive

The declaration of conformity is available at www.frogblue.com

General product information as well as information about the operation of the product and the proper disposal is available in the user manual at www.frogblue.com