

frogRoomSense

Multifunctional sensor with replaceable CR2450 battery (45 x 45 x 13 mm) with sensors for temperature, humidity and brightness.



Technical Data

Category

Article designation	frogRoomSense
Article number	SU-RoomSense.01
Type of assembly	Mounting plate or adhesive pad

Functions an power

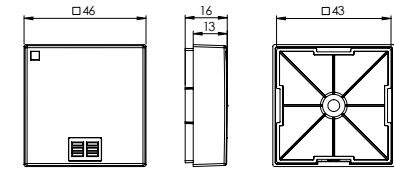
Inputs	-
Outputs	-
Integrated logic module	Yes
Configuration Backup	Yes
Acceleration sensor	-
Air pressure sensor	-
Air humidity sensor	Measuring range from 0 - 100% relative humidity, non-condensing
Temperature sensor	Measuring range from -20°C to 50°C
Brightness sensor	Measuring range from 0.01 lux to 100 k lux

frogRoomSense

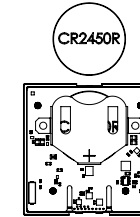
Dimension and weight

Dimensions (L x B x H): 46 x 46 x 13mm

Weight: 37g



Connection example



Battery

Type	CR2450R 3V lithium battery (recommended Murata CR2450R)
Quantity	1
Battery replaceable	Yes
Service life	Up to 3 years (temperature repetition rate "normal")

Network

WLAN	No
Bluetooth®	Bluetooth® 4.2 Low Energy
Frequency range	2400-2483,5 MHz, max. 3,4 dBm
Typical radio open field range	30 meters

Operation and storage

Ambient temperature	-20°C to +55°C
Storage/transport temperature	-25°C to +60°C
Air humidity (during operation)	(Non-condensing)
IP protection class	IP20

Packaging

Packaging size	1 unit
EAN 1 unit	4260578530781
Packaging dimensions (L x B x H) 1 unit	75 x 75 x 30 mm

