

frogblue Actuator

frogAct1-3

A1-3-400.01

1-channel actuator

Intended use

Multifunctional 1-channel switching actuator for lights or other appliances with 3 inputs to monitor buttons and switches (110-240 V~). With comfort and timer functions, power measurement and short-circuit detection (1x 400 W @ 230 V~).

For installation in flush-mounted box according to DIN 49073. (For installation behind a switch insert a flush-mounted box depth of minimum 53 mm is necessary, otherwise single mounting is required.)

Safety information

Electrical equipment may only be installed and fitted by qualified electricians.

Failure to observe the instructions may cause damage to the device and result in fire and other hazards!

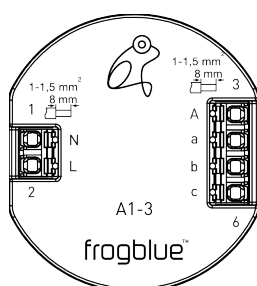
Danger of electric shock. Device is not suitable for disconnection from supply voltage. Even when the device is turned off, the load is not electrically isolated from the mains.

Danger of electric shock. Before starting work on the device or replacing light sources, disconnect the power supply and switch off the circuit breakers.

Country-specific regulations must be observed.

These instructions are an integral part of the product and must remain with the end customer.

Device setup



- L/N: Mains supply connection
A: Load output
a: Input 1
b: Input 2
c: Input 3

Function

System information

This device is a product of the frogblue system. Detailed technical expertise obtained through frogblue training sessions is required.

The functionality of the device depends on the software. Detailed information regarding software versions and the respective range of functions can be found on the frogblue website. Technical descriptions, further detailed instructions and information for proper disposal are available in the manual on the frogblue website at all times.

Commissioning and configuration are performed using the frogblue app.

Product characteristics:

- Short-circuit protection
- High-temperature shutoff (>75 °C)
- Feedback of the output status
- Configurable switch-on and switch-off times
- Switch-on and switch-off delay
- Power supply via mains power cable, no additional cabling required between frogblue modules

Information for qualified electricians

Fitting and electrical connection



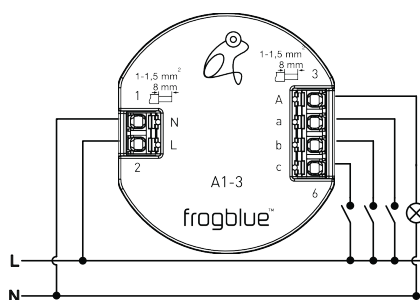
DANGER!

Electric shock if live parts are touched.

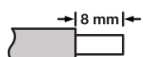
Electric shocks can be fatal.

Before working on the device, disconnect the power supply and cover live parts in the working environment!

Connecting and installing the device

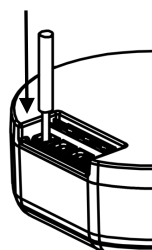


Stripping length



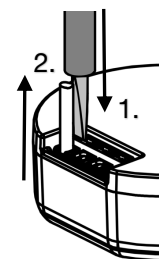
Ø 1 ... 1,5 mm²; rigid conductors recommended

Connecting wires



push conductor completely in terminal

Disconnecting wires



1. push and hold release button with screwdriver (size 3)
2. pull wire

repeat the process with each wire

Factory default output function

Output A: Lamp

Factory default input function

Input	Output
a	brief activation
A	toggle

Technical data

Rated voltage AC 110-240 V~
Mains frequency 50 / 60 Hz

Inputs 3; 110-240 V~

Bluetooth Bluetooth 4.2 Low Energy

Frequency range 2400 MHz – 2483.5 MHz, max. 3.4 dBm

Ambient temperature -25 ... +50 °C
Storage/transport temperature -25 ... +70 °C

Outputs 1; 110-240 V~

Contact type ε, MOSFET

Suitable loads Incandescent lamp load
Electronic transformer
Inductive load (no motor load)

Connected load 400 W / 400 VA (220-240 V~)
200 W / 200 VA (110-219 V~)

Dimensions (LxWxH) 48 x 53 x 21 mm
Connection type Spring plug-in terminal
Core cross-section 1 ... 1.5 mm²

Technical changes reserved.

Further information to products, operating instructions as well as proper disposal are available in our user manual at: www.frogblue.com

Warranty

The warranty is subject to the statutory provisions relating to the specialist retailer.

Declaration of Conformity

Hereby frogblue AG, Luxemburger Str. 6, 67657 Kaiserslautern, declares that this device is in compliance with the essential requirements and other relevant provisions of directive

2014/53/EU Radio Equipment Directive
2011/65/EU RoHS Directive

The declaration of conformity is available at www.frogblue.com