

frogblue DALI Bridge

frogDALI SU-DALI2.01

DALI interface

Intended use

Interface for integrating the DALI/DALI2 bus into the frogblue system to make the cabled system wireless. Connected and supplied over the DALI bus, with 2 contact inputs for polling floating sensors/switches. Easy configuration with the frogblue app.

Installation in a junction box in accordance with DIN 49073. (Box depth min. 53 mm for installation behind switch insert; for smaller depths, individual installation is necessary.)

Safety instructions

Installation and assembly of electrical devices must always be carried out by a qualified electrician.

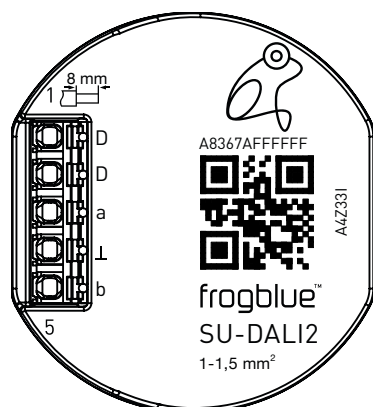
Failure to comply with the instructions can cause damage to the device, fire or other hazards!

Risk of electric shock. Before working on the device or replacing lamps, disconnect the mains voltage and switch off the circuit breaker.

Country-specific regulations must be observed.

These instructions are part of the product and must remain with the customer.

Device configuration



D: DALI
D: DALI
a: input 1
L: earth
b: input 2

Function

System information

This device is a frogblue system product. Detailed expertise acquired in a frogblue training course is required.

The function of the device depends on software. Detailed information about software versions and the respective scope of functions can be found on the frogblue website.

Technical descriptions, more detailed instructions and information on proper disposal are provided in the manual, which is available on the frogblue website.

The frogblue app has to be used for start-up and configuration.

Product features:

- Configurable switching behaviour (on/off)
- Supply via DALI power supply, no additional cables between the frogblue modules required

Information for qualified electricians

Installation and electrical connection



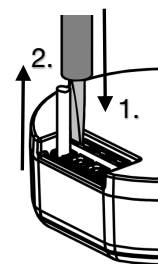
DANGER!

Electric shock from touching live parts.

An electric shock can be fatal.

Before working on the device, disconnect it from the mains power and cover any live parts in the vicinity.

Disconnecting wires



1. Press and hold with a slotted screwdriver (size 3) to release.
2. Pull out the wires.

Repeat the process for each wire.

Technical data

Supply voltage DALI	(9.5 V – 22.5 V)
Current consumption	8 mA @ 16 V
Bluetooth	Bluetooth 4.2 low energy
Frequency range	2400 – 2483.5 MHz, max. -0.2 dBm
Inputs	2
Ambient temperature	-25 – +55 °C
Storage/transport temperature	-25 – +70 °C
Outputs	DALI
Dimensions (L x W x H)	48 x 53 x 21 mm
Connection type	spring terminal
Conductor cross-section	1 – 1.5 mm ²

Subject to technical changes.

Warranty

The warranty is provided by specialist dealers within the framework of the statutory provisions.

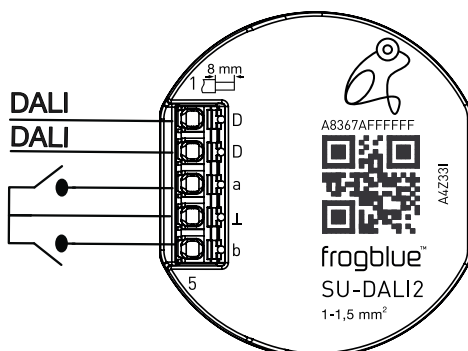
Declaration of Conformity

frogblue AG, Luxemburger Str. 6, 67657 Kaiserslautern, Germany, hereby declares that this product complies with the fundamental requirements and other relevant conditions of the following directives:

2014/53/EU RED Directive
2011/65/EU RoHS Directive

A copy of the Declaration of Conformity is available at www.frogblue.com

Connecting and installing the device

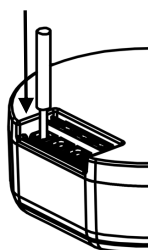


Stripping length



Ø 1 to 1.5 mm², rigid conductors recommended

Connecting wires



push the conductor fully into the terminal